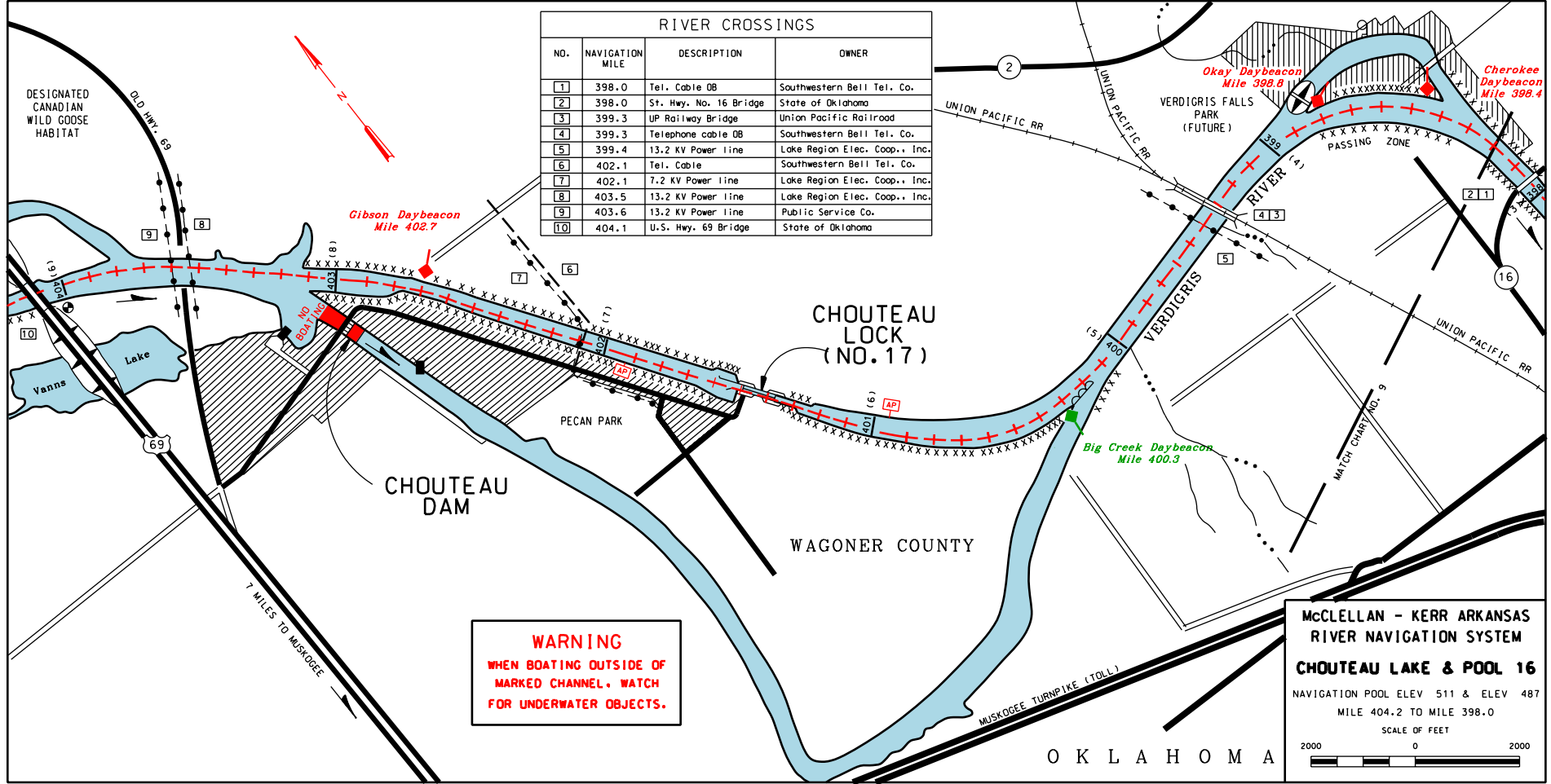


RIVER CROSSINGS			
NO.	NAVIGATION MILE	DESCRIPTION	OWNER
1	398.0	Tel. Cable DB	Southwestern Bell Tel. Co.
2	398.0	St. Hwy. No. 16 Bridge	State of Oklahoma
3	399.3	UP Railway Bridge	Union Pacific Railroad
4	399.3	Telephone cable DB	Southwestern Bell Tel. Co.
5	399.4	13.2 KV Power line	Lake Region Elec. Coop., Inc.
6	402.1	Tel. Cable	Southwestern Bell Tel. Co.
7	402.1	7.2 KV Power line	Lake Region Elec. Coop., Inc.
8	403.5	13.2 KV Power line	Lake Region Elec. Coop., Inc.
9	403.6	13.2 KV Power line	Public Service Co.
10	404.1	U.S. Hwy. 69 Bridge	State of Oklahoma



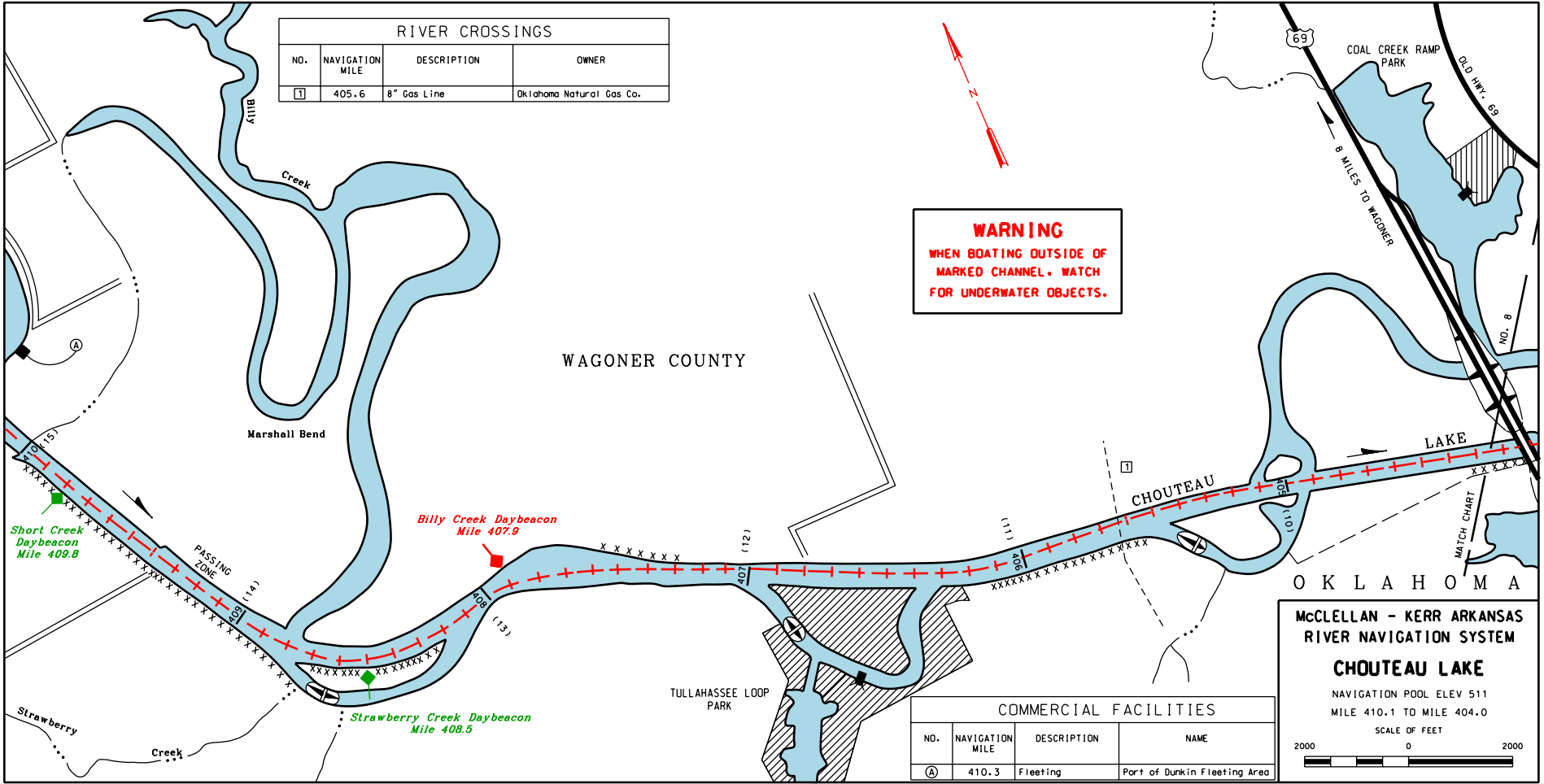
WARNING
 WHEN BOATING OUTSIDE OF
 MARKED CHANNEL. WATCH
 FOR UNDERWATER OBJECTS.

McCLELLAN - KERR ARKANSAS RIVER NAVIGATION SYSTEM
CHOUTEAU LAKE & POOL 16
 NAVIGATION POOL ELEV 511 & ELEV 487
 MILE 404.2 TO MILE 398.0
 SCALE OF FEET
 2000 0 2000

RIVER CROSSINGS			
NO.	NAVIGATION MILE	DESCRIPTION	OWNER
[1]	405.6	8" Gas Line	Oklahoma Natural Gas Co.

WARNING
 WHEN BOATING OUTSIDE OF
 MARKED CHANNEL. WATCH
 FOR UNDERWATER OBJECTS.

WAGONER COUNTY



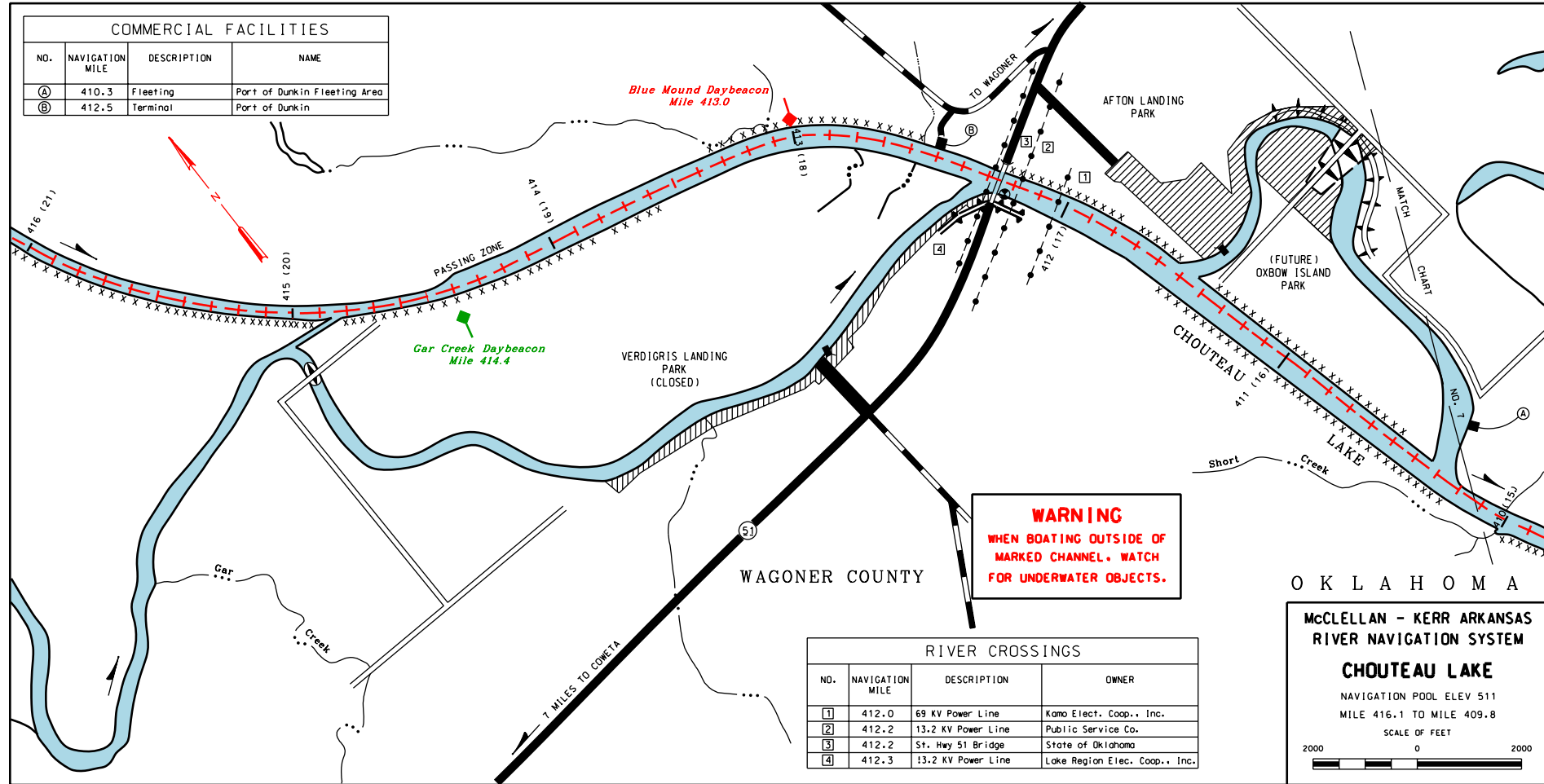
LOCK 17 (918)687-4501

COMMERCIAL FACILITIES			
NO.	NAVIGATION MILE	DESCRIPTION	NAME
[A]	410.3	Fleeting	Port of Dunkin Fleeting Area

McCLELLAN - KERR ARKANSAS RIVER NAVIGATION SYSTEM
CHOUTEAU LAKE
 NAVIGATION POOL ELEV 511
 MILE 410.1 TO MILE 404.0
 SCALE OF FEET
 2000 0 2000

CHART NO. 7

COMMERCIAL FACILITIES			
NO.	NAVIGATION MILE	DESCRIPTION	NAME
Ⓐ	410.3	Fleeting	Part of Dunkin Fleeting Area
Ⓑ	412.5	Terminal	Part of Dunkin



WARNING
 WHEN BOATING OUTSIDE OF
 MARKED CHANNEL. WATCH
 FOR UNDERWATER OBJECTS.

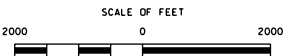
RIVER CROSSINGS			
NO.	NAVIGATION MILE	DESCRIPTION	OWNER
1	412.0	69 KV Power Line	Kamo Elect. Coop., Inc.
2	412.2	13.2 KV Power Line	Public Service Co.
3	412.2	St. Hwy 51 Bridge	State of Oklahoma
4	412.3	13.2 KV Power Line	Lake Region Elec. Coop., Inc.

O K L A H O M A

McCLELLAN - KERR ARKANSAS
 RIVER NAVIGATION SYSTEM

CHOUTEAU LAKE

NAVIGATION POOL ELEV 511
 MILE 416.1 TO MILE 409.8



UPSTREAM LOCK 18 (918)543-2216

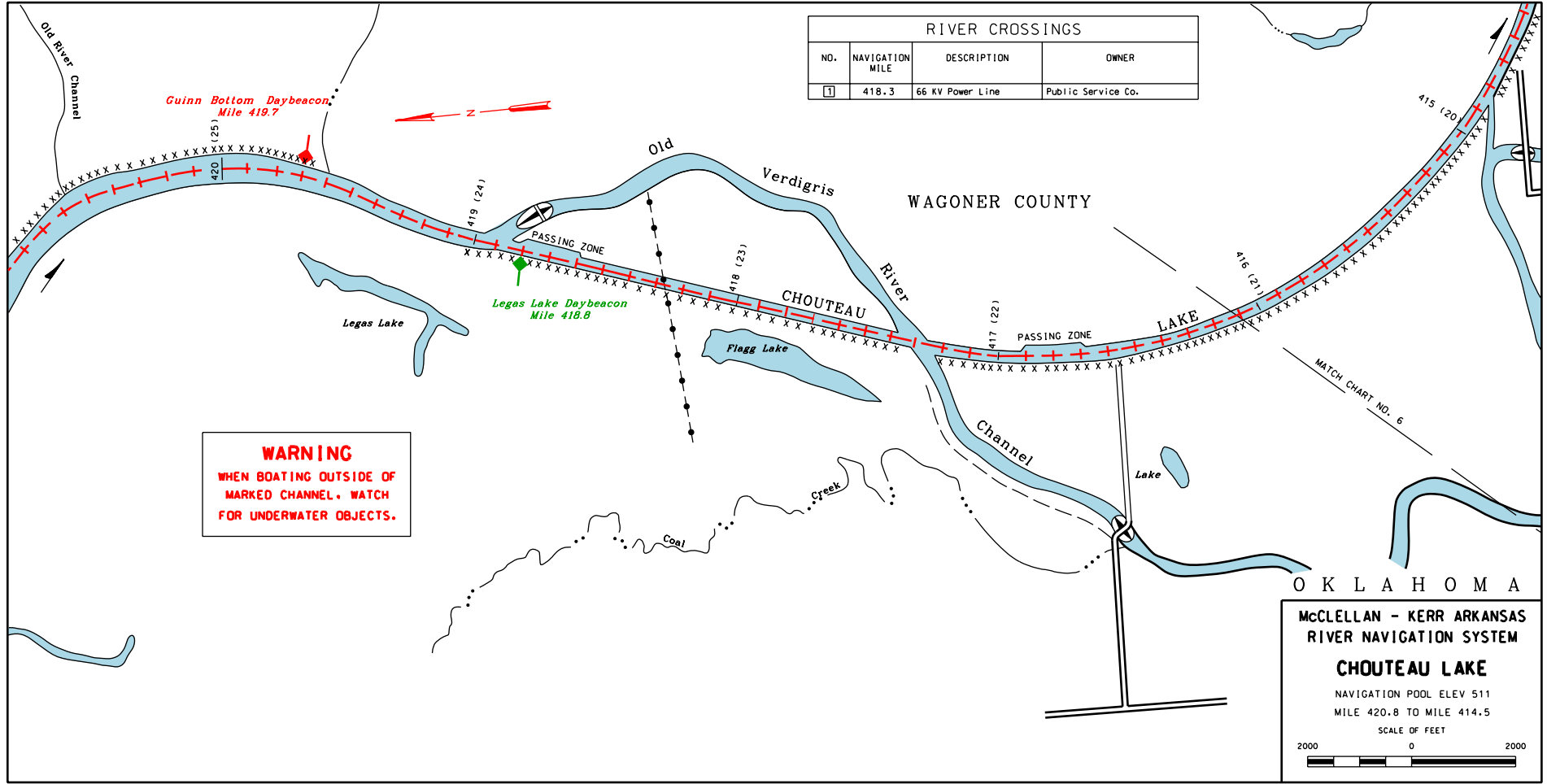
DOWNSTREAM LOCK 17 (918)687-4501

CHART NO. 6

U. S. ARMY

CORPS OF ENGINEERS

RIVER CROSSINGS			
NO.	NAVIGATION MILE	DESCRIPTION	OWNER
1	418.3	66 KV Power Line	Public Service Co.



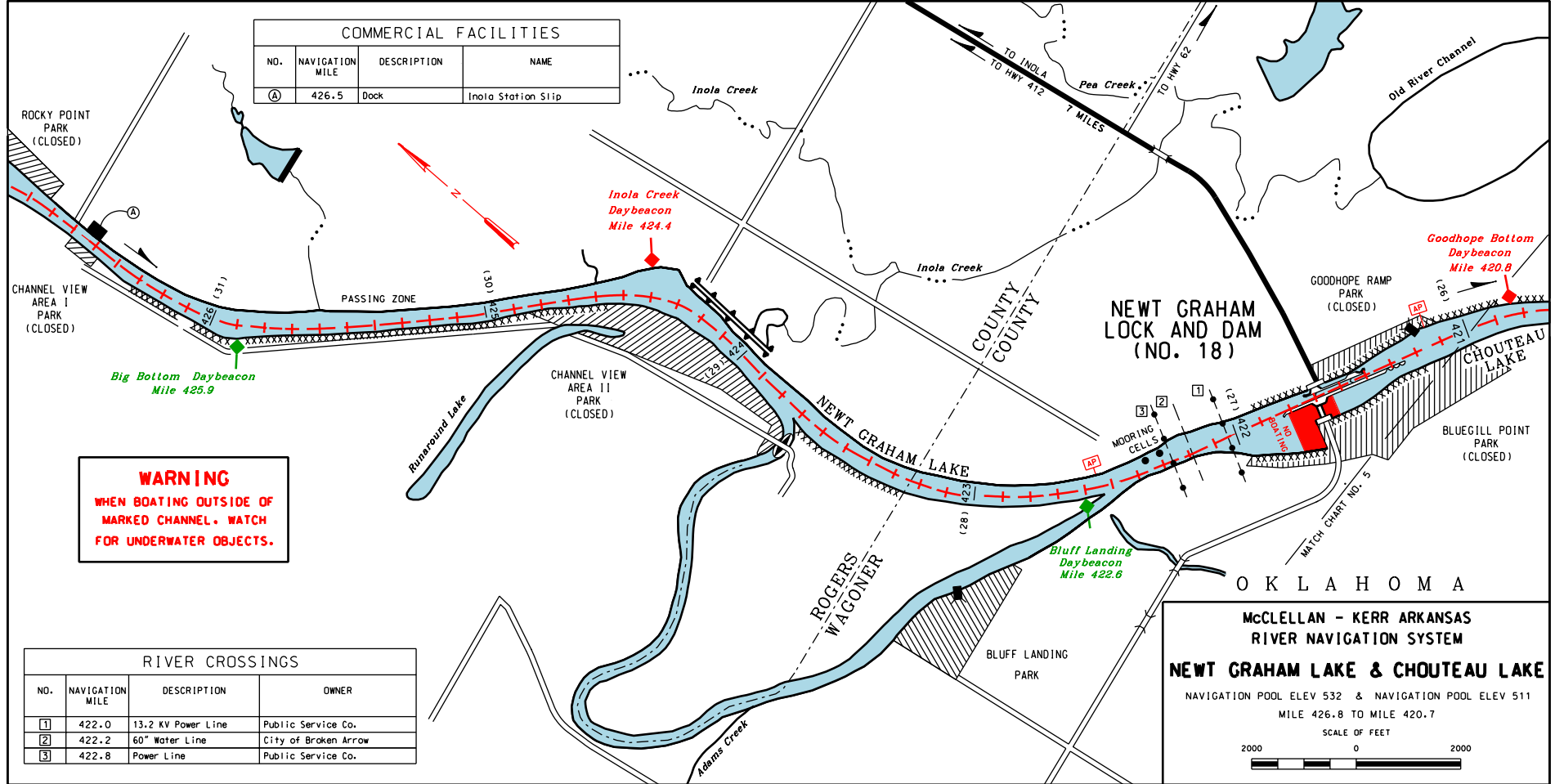
WARNING
 WHEN BOATING OUTSIDE OF
 MARKED CHANNEL. WATCH
 FOR UNDERWATER OBJECTS.

O K L A H O M A
 McCLELLAN - KERR ARKANSAS
 RIVER NAVIGATION SYSTEM
CHOUTEAU LAKE
 NAVIGATION POOL ELEV 511
 MILE 420.8 TO MILE 414.5
 SCALE OF FEET
 2000 0 2000

UPSTREAM LOCK 18 (918)543-2216 DOWNSTREAM LOCK 17 (918)687-4501

CHART NO. 5

COMMERCIAL FACILITIES			
NO.	NAVIGATION MILE	DESCRIPTION	NAME
(A)	426.5	Dock	Inola Station Slip



WARNING
 WHEN BOATING OUTSIDE OF
 MARKED CHANNEL. WATCH
 FOR UNDERWATER OBJECTS.

RIVER CROSSINGS			
NO.	NAVIGATION MILE	DESCRIPTION	OWNER
(1)	422.0	13.2 KV Power Line	Public Service Co.
(2)	422.2	60" Water Line	City of Broken Arrow
(3)	422.8	Power Line	Public Service Co.

OKLAHOMA

McCLELLAN - KERR ARKANSAS RIVER NAVIGATION SYSTEM

NEW GRAHAM LAKE & CHOUTEAU LAKE

NAVIGATION POOL ELEV 532 & NAVIGATION POOL ELEV 511
 MILE 426.8 TO MILE 420.7

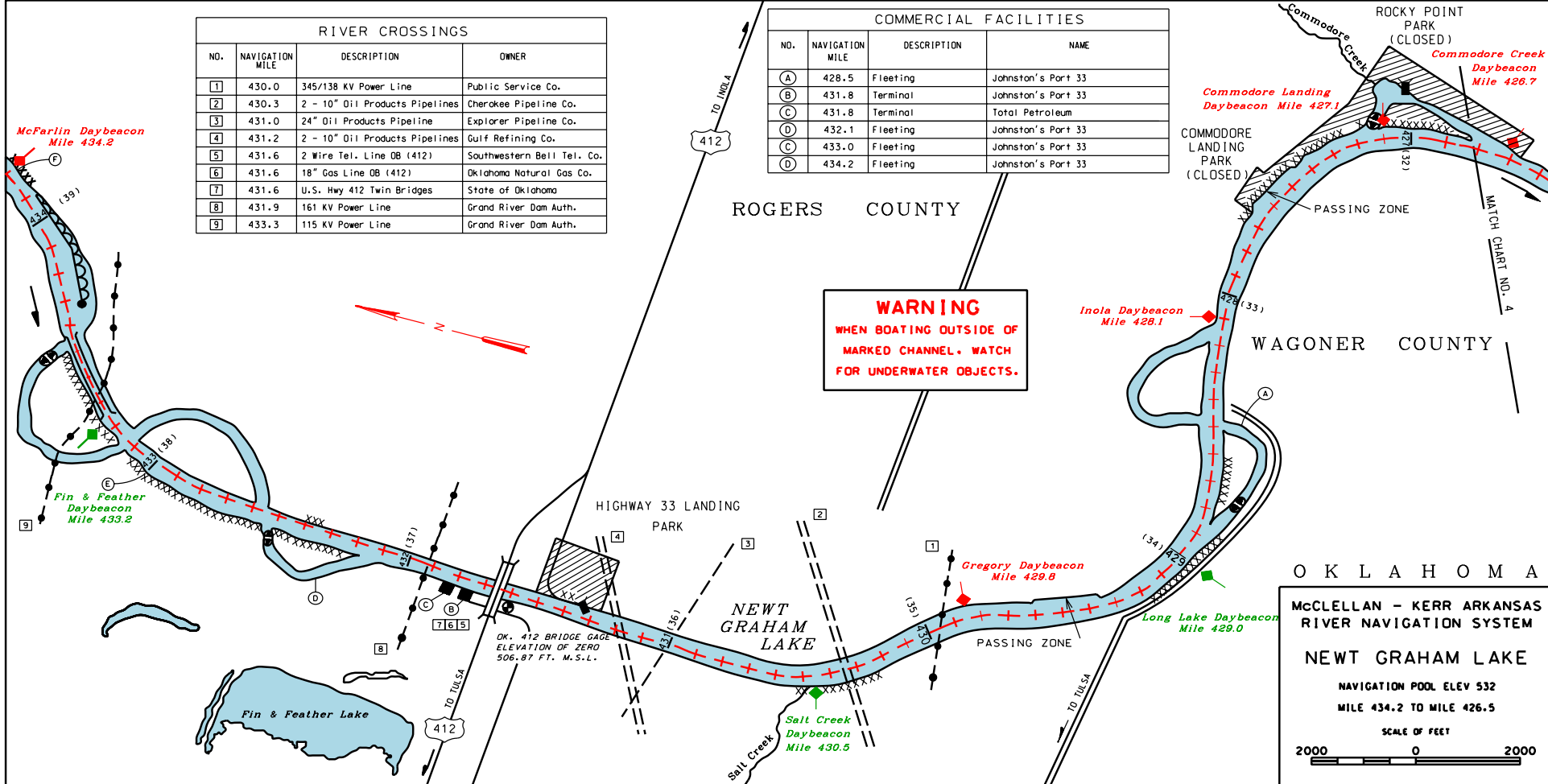
SCALE OF FEET

U. S. ARMY

CORPS OF ENGINEERS

RIVER CROSSINGS			
NO.	NAVIGATION MILE	DESCRIPTION	OWNER
[1]	430.0	345/138 KV Power Line	Public Service Co.
[2]	430.3	2 - 10" Oil Products Pipelines	Cherokee Pipeline Co.
[3]	431.0	24" Oil Products Pipeline	Explorer Pipeline Co.
[4]	431.2	2 - 10" Oil Products Pipelines	Gulf Refining Co.
[5]	431.6	2 Wire Tel. Line DB (412)	Southwestern Bell Tel. Co.
[6]	431.6	18" Gas Line DB (412)	Oklahoma Natural Gas Co.
[7]	431.6	U.S. Hwy 412 Twin Bridges	State of Oklahoma
[8]	431.9	161 KV Power Line	Grand River Dam Auth.
[9]	433.3	115 KV Power Line	Grand River Dam Auth.

COMMERCIAL FACILITIES			
NO.	NAVIGATION MILE	DESCRIPTION	NAME
(A)	428.5	Fleeting	Johnston's Port 33
(B)	431.8	Terminal	Johnston's Port 33
(C)	431.8	Terminal	Total Petroleum
(D)	432.1	Fleeting	Johnston's Port 33
(C)	433.0	Fleeting	Johnston's Port 33
(D)	434.2	Fleeting	Johnston's Port 33



WARNING
WHEN BOATING OUTSIDE OF
MARKED CHANNEL. WATCH
FOR UNDERWATER OBJECTS.

O K L A H O M A

McCLELLAN - KERR ARKANSAS
RIVER NAVIGATION SYSTEM

NEWT GRAHAM LAKE

NAVIGATION POOL ELEV 532
MILE 434.2 TO MILE 426.5

SCALE OF FEET

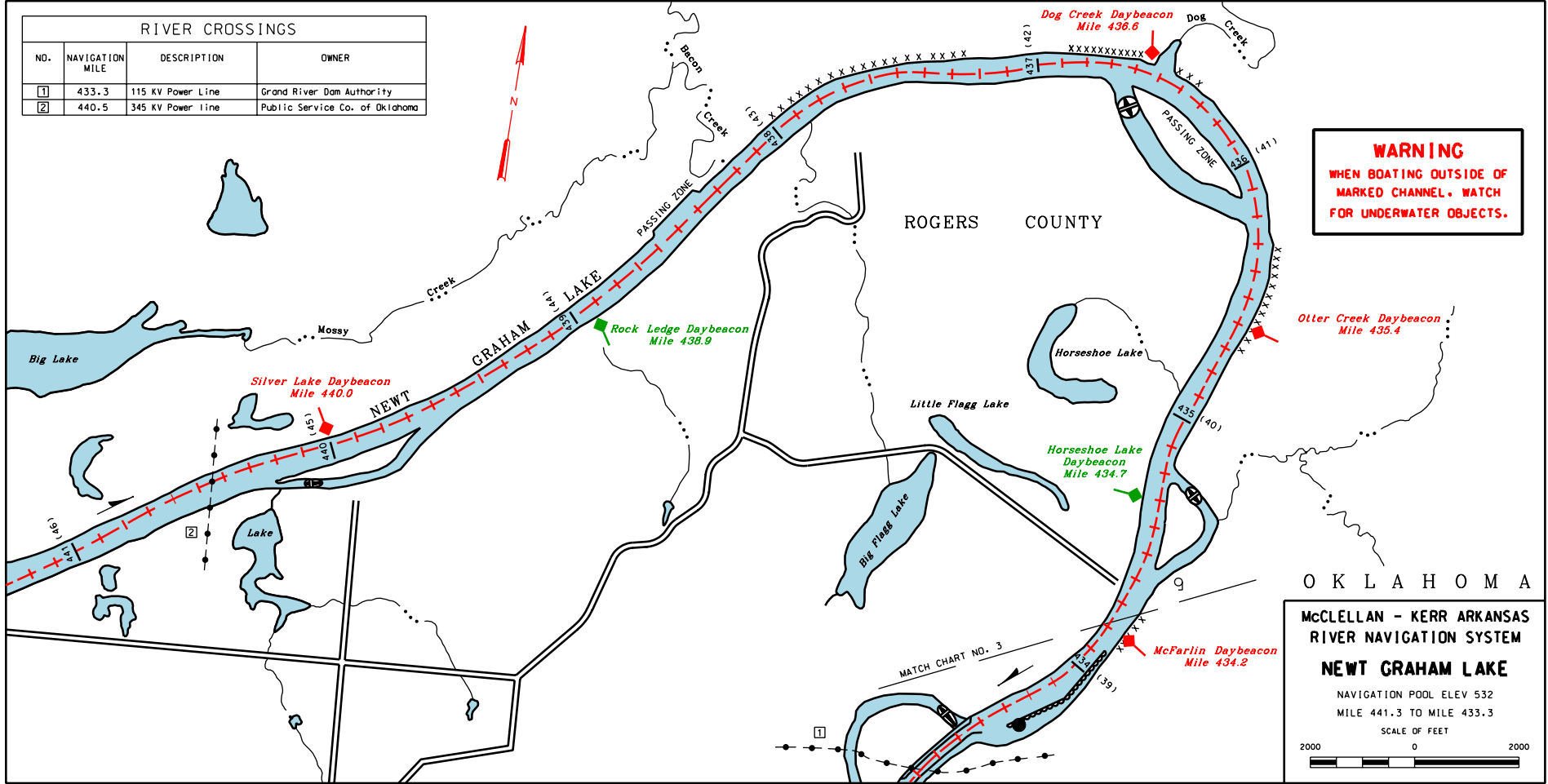
2000 0 2000

LOCK 18 (918)543-2216

CHART NO. 3

RIVER CROSSINGS			
NO.	NAVIGATION MILE	DESCRIPTION	OWNER
1	433.3	115 KV Power Line	Grand River Dam Authority
2	440.5	345 KV Power Line	Public Service Co. of Oklahoma

WARNING
 WHEN BOATING OUTSIDE OF
 MARKED CHANNEL. WATCH
 FOR UNDERWATER OBJECTS.



O K L A H O M A
 McCLELLAN - KERR ARKANSAS
 RIVER NAVIGATION SYSTEM
NEW GRAHAM LAKE
 NAVIGATION POOL ELEV 532
 MILE 441.3 TO MILE 433.3
 SCALE OF FEET
 2000 0 2000

